

# AT THE AIRPORT

SPRING  
COPYRIGHT 1981

MUSIC BY BRIAN KEANE

LYRICS BY STEPHEN SCHNEIDER

published by BRIAN KEANE MUSIC ASCAP

I.V.I MUSIC Group BMI

recorded on "AT THE AIRPORT" WEA  
instrumentally

LARRY CORNELL & BRIAN KEANE

"JUST LIKE BEING BORN" FLYING FISH

LARRY CORNELL

as vocal single by MARTY BEAR "BEAR FAX"



# At the Airport - music by 1981 BRIAN KEANE

(Instrumental version)

Lyrics by STEPHEN SCHWEIDER

1. Rubato thru First ending

2. LATIN GROOVE

"AT THE AIRPORT" LARRY CORNELL WEA  
"Just like Kelly Korn" "Flyin' Fish"  
"Road to Home" Mark Bear Bonfor

**[A]**

Chords: Dmaj7, C#11, Bmaj7, A-9, Gmaj7, C9-5, B-11, E7, E-7, A7-9 13

**[B]**

Chords: B-7, Gmaj7, F#-7, B7, E-7, Asus, A7, D, A/C#, Bm, A, Gmaj7, E7/G#

*In tempo Latin*

Chords: A11, A7-9 13

repeat to letter A

**[C]**

Chords: Fmaj7, Bbmaj7, C#dim, Fmaj7, Eb-7, Ab7



Handwritten musical score for "At the Airport" by B. Keane, featuring S. Schneider. The score is written on ten staves, with the first five staves containing the main melody and the last five staves containing a solo section. The key signature is one flat (Bb), and the time signature is 4/4.

**Staff 1:** Dbmaj7, Amaj7

**Staff 2:** Dmaj7, Gmaj7, A11, C#dim

**Staff 3:** Dmaj7, C#11, Bmaj7, A-9, Gmaj7, C9-5

**Staff 4:** B-11, E7, E-7, A7-913

**Staff 5:** Dmaj7, C#11, Bmaj7, A-9, Gmaj7, C9-5

**Staff 6:** B-11, E7, E-7, A11, A11 solo FOL

**Staff 7 (Solo):** Dmaj7, C#11, Bmaj7, A-9, Gmaj7, C9-5, B-11, E7, E-7, A7

**Staff 8:** B-7, Gmaj7, F#-7, B7, E-7, A7

**Staff 9:** D#7, B- A, Gmaj7, E7/G#, A11 (solo), Bb11

**Staff 10:** Ebmaj7, D-7, Cmaj7, Bb-9, Abmaj7, Db9-5, C-11, F7, F-7, Bb7

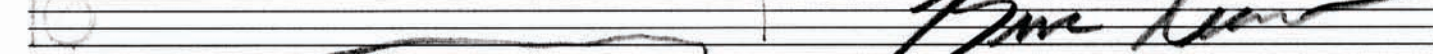
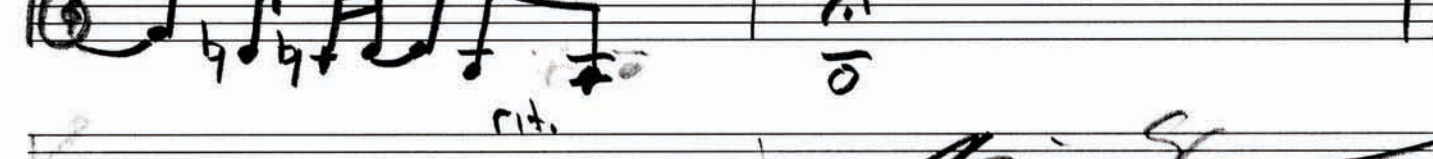
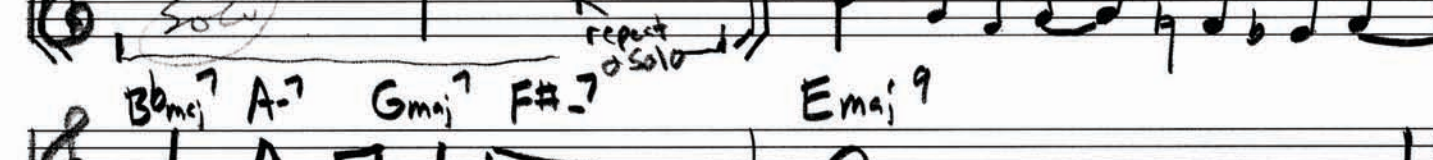
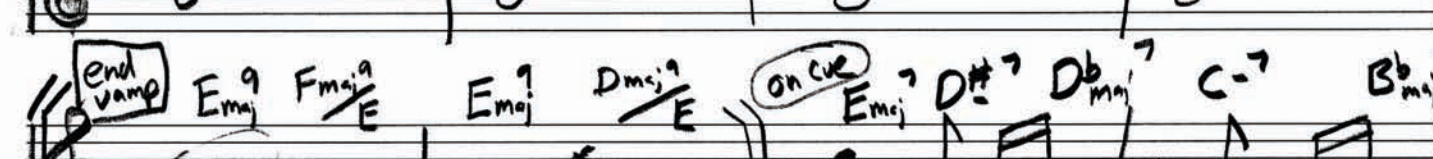
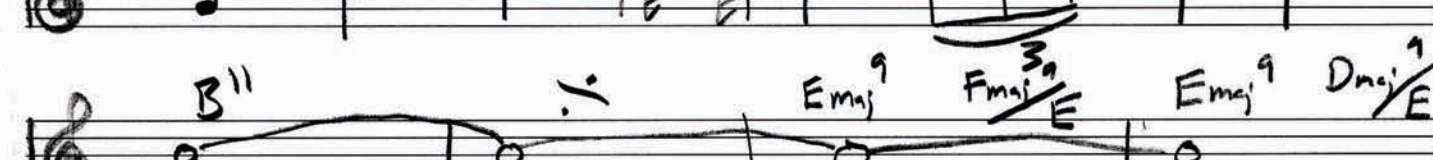
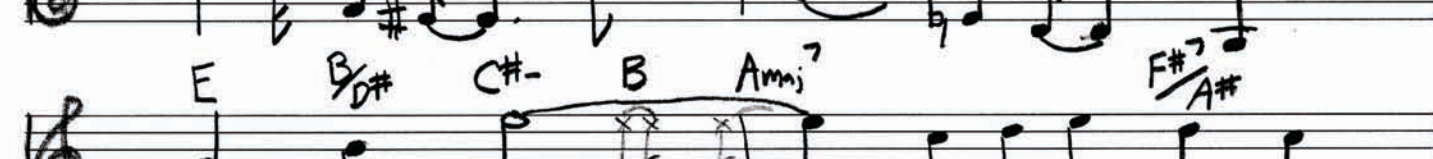
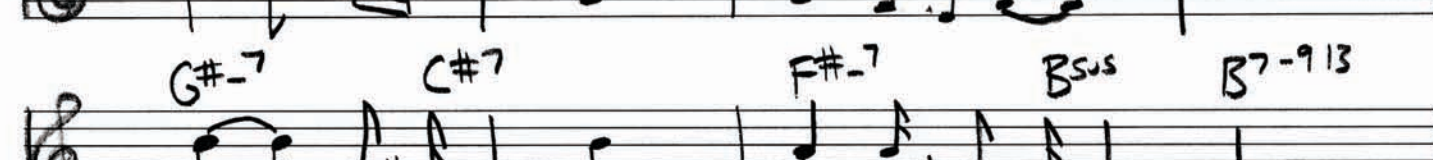
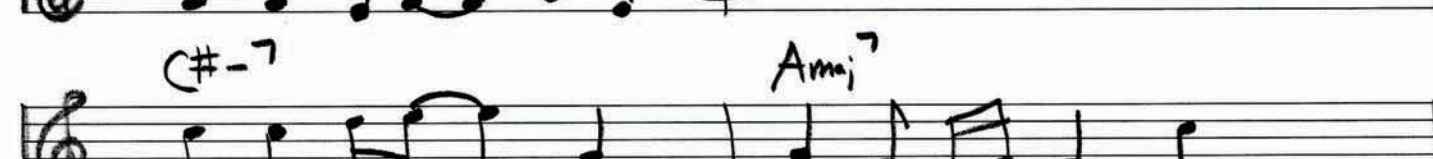
**Staff 11:** Ebmaj7, D-7, Cmaj7, Bb-9, Abmaj7, Db9-5, C-11, F7, Bb11



Bb11

B11

3



Concert lead sheet